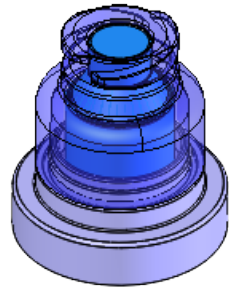


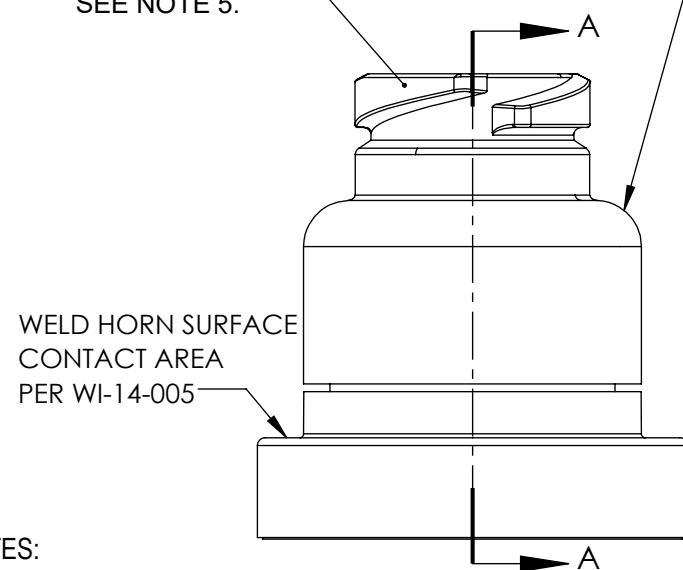
REVISION HISTORY

REV	DESCRIPTION (ECO)	DATE	APPROVED
G	UPDATE WELD HEIGHT, ECO 12020	01/23/23	SR
H	ADD SUFFIX OPTION TO NOTE 1. SHOW FLAT CAP OPTIONS ECO 12789	08/12/24	DK



LUER BODY
SWABABLE
SEE NOTE 5.

— LUER BODY SWABABLE
SUFFIX OPTION - 24
CLEAR POLYCARBONATE



NOTES:

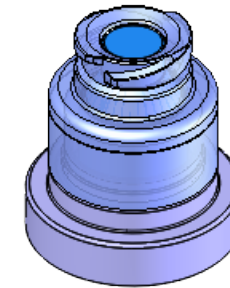
1. SUFFIX "XX" INDICATES MATERIAL:

24 - CLEAR POLYCARBONATE MAKROLON Rx1805451118.

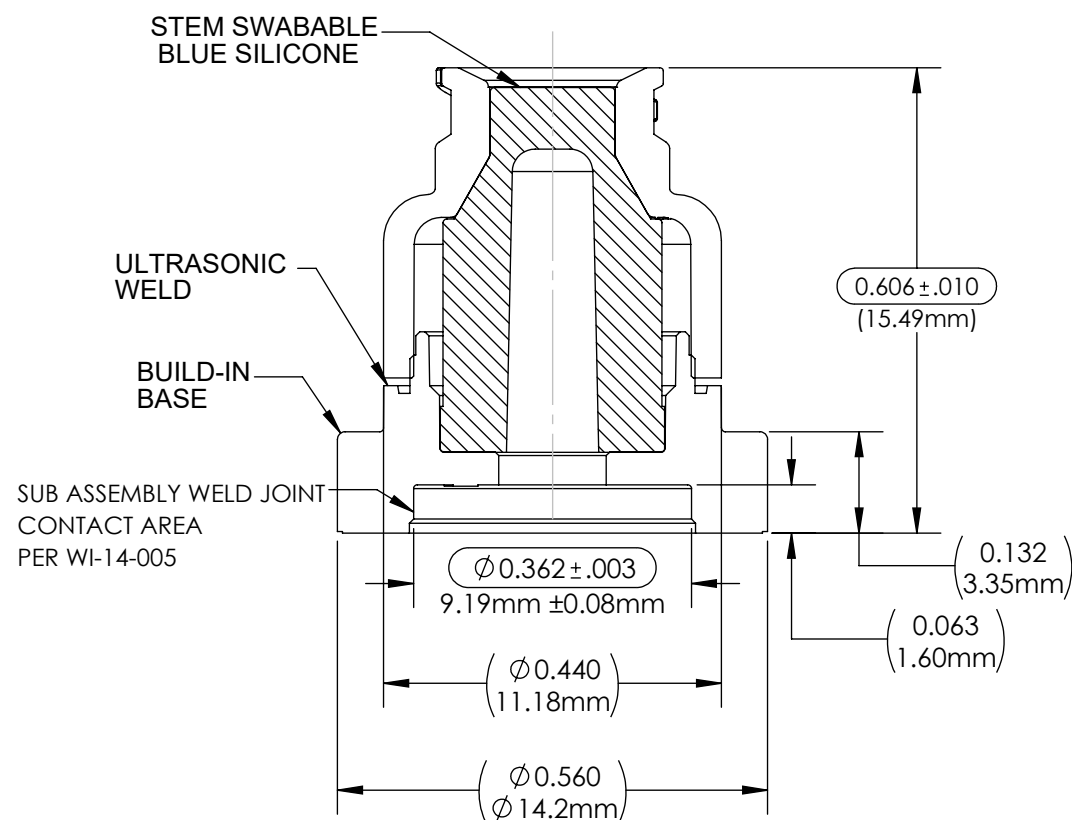
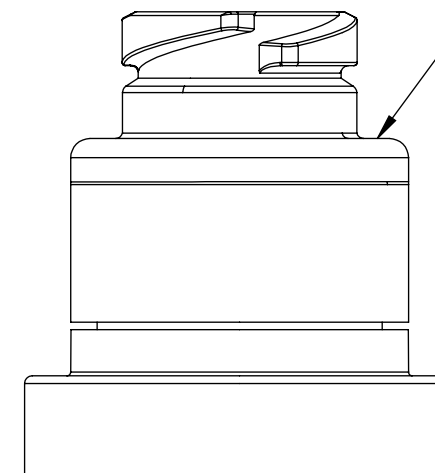
70 - CLEAR TERLUX HD 2812
2. CRITICAL DIMENSIONS ARE CIRCLED AND ARE SUBJECT TO INSPECTION.
3. DIMENSIONS IN PARENTHESES ARE REFERENCE ONLY.
4. ALL DIMENSIONS ARE IN INCHES, WITH NOMINAL DIMENSION IN METRIC BELOW.
5. LUER COMPATIBLE WITH ISO594-2, AND ISO80369-7.

VALVE SPECIFICATIONS:

BACK PRESSURE: > 30 PSI REF, (2.1 BAR) (40 PSI NOMINAL).
 BIOCOMPATIBILITY: PASSES ISO 10993 PART 1.
 MATERIALS: ALL MATERIALS ARE GAMMA RESISTANT, MEET USP CLASS VI; DEHP
 FREE AND NOT MADE WITH NATURAL RUBBER LATEX.
 POTENTIAL STERILIZATION: ETO AND GAMMA BASED ON RAW MATERIAL
 SPECIFICATIONS AND
 OEM VALIDATION.



— LUER BODY SWABABLE
SUFFIX OPTION;
70 - CLEAR TERLUX




SECTION A-A

QUALITY CRITERIA

O.D. FLASH: 0.015 MAX (0.4mm)

GATE VESTIGE: 0.01 MAX (0.3mm)

EMBEDDED PARTICLES, BUBBLES, SPOTS, STAINS: 0.3mm² MAX.
NO MORE THAN 3 PER PART.

DRAWN BY S. Eckert		DATE 4/29/14		<div> <div> <div>HR® Halkey-Roberts®</div> <div>TITLE</div> <div>BUILD-IN ASSEMBLY</div> </div> <div> <div>SIZE</div> <div>B</div> </div> <div> <div>DRAWING NO.</div> <div>C2456800XX</div> </div> <div> <div>REV</div> <div>H</div> </div> </div>	
APPROVED BY AK		DATE 4/29/14			
MATERIAL SEE BOM					
FINISH					
UNLESS OTHERWISE SPECIFIED: DIMENSIONS ARE IN INCHES TOLERANCES: ANGULAR: ± .1° TWO PLACE DECIMAL: .01 THREE PLACE DECIMAL: .005		THIRD ANGLE PROJECTION 		<div> <div>SCALE</div> <div>4:1</div> </div> <div>DO NOT SCALE DRAWING</div> <div> <div>SHEET</div> <div>1 OF 2</div> </div>	

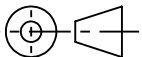
BILL OF MATERIAL:

SUFFIX "XX"	LUER BODY	BUILD IN BASE	STEM
24	CLEAR POLYCARBONATE MAKROLON RX1805451118	CLEAR POLYCARBONATE MAKROLON RX1805451118	BLUE SILICONE 40 DUROMETER WACKER LR3003/40 DT COLOR, K75238
70	CLEAR TERLUX HD2812	CLEAR TERLUX HD2812	BLUE SILICONE 40 DUROMETER WACKER LR3003/40 DT COLOR, K75238

MOLDED PARTS:
GATES, PARTING LINES, AND FLASH PER QUALITY CRITERIA

PROPRIETARY AND CONFIDENTIAL
THE INFORMATION CONTAINED IN THIS DRAWING IS SOLE PROPERTY
OF HALKEY-ROBERTS CORPORATION. ST. PETERSBURG, FL. ANY
REPRODUCTION IN PART OR AS A WHOLE WITHOUT THE WRITTEN
PERMISSION OF HALKEY-ROBERTS CORPORATION IS PROHIBITED.

UNLESS OTHERWISE SPECIFIED:
DIMENSIONS ARE IN INCHES
TOLERANCES:
ANGULAR: ± 1°
TWO PLACE DECIMAL ± .01
THREE PLACE DECIMAL ± .005

THIRD ANGLE PROJECTION


DRAWN BY
S. Eckert

APPROVED BY
AK

MATERIAL
SEE BOM

FINISH

DATE
4/29/14

DATE
4/29/14

HR® Halkey-Roberts®

TITLE
BUILD-IN ASSEMBLY

SIZE
B

DRAWING NO.
C2456800XX

REV
H

SCALE
4:1

DO NOT SCALE DRAWING

SHEET
2 OF 2